

EDEN AMATEUR FISHING CLUB INC SEPTEMBER 2014 NEWSLETTER



COMING EVENTS

Sat Sept 27th Sun Sept 28th

Gender Bender mini-comp and BBQ

Please let us know if you intend to participate

Call Bob 64963585 or let Gwen know when you book for the BBQ

Her Number is 02 64962134

Friday 17th , Sat 18th , Sun 19th , October
Mallacoota weekend

Saturday October 25th
BBQ, raffle & fish of the month

Fish of the month September - Trevally
Fish of the month October - Bream

2014 - 2015 EAFCC INC. COMMITTEE

| | | | |
|---------------------------------------|-------------------------|--------------|--|
| President | Bob Wilcox | 0448 406 574 | robwilly@bigpond.com |
| Vice President | Wayne Holding | 02 6495 7492 | service@sapphiresmarine.com.au |
| Vice President | Eddy Evans | 0418 556 414 | eddyev@bigpond.net.au |
| Treasurer | Allison Paterson | 02 6427 9119 | alison.pat55@gmail.com |
| Secretary | Heidi Welsh | 02 6496 1746 | whill0@bigpond.com |
| Committee Member Catering Officer | Gwen Bobbin | 02 6496 2134 | |
| Committee Member & Membership Officer | John Mutch | 02 6496 4335 | dandimutch@iprimus.com.au |
| Committee Member & Weighmaster | Rod Paterson | 02 6427 9119 | alison.pat55@gmail.com |
| Committee Member | Carole Edwards | 02 6496 1418 | carochris@outlook.com |
| Public Officer | Heidi Welsh | 0419 566 842 | whwelsh@hotmail.com |
| Editor and Webmaster | Peter van de Waterbeemd | 0412 632 470 | waterbee@bigpond.com |
| Clubhouse | | 02 6496 3410 | info@edenfishingclub.org |
| Marine Rescue | | 02 6496 2167 | Eden Police |
| Eden Medical Centre | | 02 6496 3322 | NSW Fisheries |
| | | | 02 6496 1444 |
| | | | 02 6496 8200 |

FISH WEIGHT COMPETITIONS

If you are a member and "have caught the big one" have it weighed! The club has competitions running throughout the year. To enter the competitions, weigh tickets must be presented to the Weigh master.

Our major competition is for the **Heaviest Fish**. The weight of the heaviest fish in a nominated list of species is recorded for the period from 1 July to 30 June. There are four categories in this competition: Men, Ladies, Boys and Girls. The angler who catches the heaviest fish in a species in each category during the year receives a trophy at our presentation night.

The angler from any category who catches the largest number of heaviest fish is awarded the **Club Champion trophy**.

Also from within this competition, one fish is selected by the committee in each of the categories (Men, Ladies, Boys and Girls) each year for the **Most Meritorious Fish award**.

The second competition is our **Fish of the Month competition**. This competition has three categories, Men, Ladies and Juniors. At the beginning of the year, a nominated species of fish is chosen for each month as the Fish of the Month. The list is published in the Newsletter and on the Website. In any month, the angler submitting a weigh ticket for the heaviest nominated fish in a category is awarded a cash prize.

The angler with the heaviest fish is also awarded 3 points, the angler with the next heaviest fish receives 2 points, and all anglers submitting a weigh ticket for the species of the month receive 1 point. Points are tallied throughout the year and an **All Rounder Award** is presented to the angler scoring the highest number of points by the end of the year, for Seniors (from Men and Ladies) and for Juniors (from Boys and Girls).

EAFCC weigh stations include:

- Eden Amateur Fishing Club Inc clubhouse at Quarantine Bay, Eden.
- Eden Outdoor and Marine - in the main shopping centre in Eden.
- Matildas Shop n Go - at the top of the hill as you head south out of Eden.
- Kah General Store - on the highway 12 minutes drive south of Eden.
- Wonboyn General Store - 33kms south of Eden in the beautiful village of Wonboyn.
- Shell Bait & Fuel Service Station - Berka Road, Mallacoota, Victoria.
- Alpine Angler - Snowy Mountains Highway, Cooma.

It is the responsibility of every angler to make sure their fish receipt is correct when weigh in occurs. All weighdoctors are valid for two months only.

Presidents report September 2014

Greetings members,

Its tomato planting time again and with warming weather after good rain we should be in for bumper crops.



Despite a lot of members being away for various reasons a group of thirty turned up for the August BBQ, a good number under the circumstances.

Fish of the month Junior : The much anticipated presentation to find the best Morwong fisher persons began with the Junior division and the winner, uncontested was April, no surprise there, well done April.

Ladies section : Stony silence was the response to the call for a Lady to open the bidding and that was the end of that. Not good form for the Gender Bender which is only a couple of weeks away, lucky they have a junior angler in good touch.

On the other hand the Gents appear to be training well and will be determined to shake off the complacency that saw them suffer an embarrassing defeat at the hands of the fairer sex in last years event. It isn't true that they are still complaining about the draw that allowed a star performer to be poached by the opposition.

Gents section : The bidding got under way and Bobnalong jumped in first, feeling that his 0.518 kg tiddler would be the smallest caught, and it was, but only just, John Ryan and Rod Paterson didn't do much better. Fritz spoke next, but not with confidence and his 1.3 kg effort was soon trumped by Peter Van De Waterbeemd with 1.4 kg. There had to be bigger ones caught and Terry Carson raised the bar to 1.6 but unfortunately for Terry, rumours that there was a docket for an outstanding fish floating around proved to be true. The catcher of the big one was Ken Neath and at 3.428 kg his Morwong truly was an outstanding catch, congratulations Ken. It was not however a club record, this stands at 3.880kg and was caught by Peter Everett in 1990.

We are now well into the **Trevally** month and I hear that there are some good ones around. They can be caught from the Jetties, beaches and the ocean but your best bet for a good one is probably the estuaries and lakes. We will find out who the winners are at the Gender Bender BBQ.

October target fish : This is when Bream enthusiasts get all excited about their fishing. Don't forget that the measure and release competition for Bream is now running and there is at least one large specimen swimming around suffering no more damage than a sore jaw after having been photographed and then released. Would it have been so lucky if not for the new comp ??

Gender bender : This is a two day event starting at 7:00 am on Saturday the 27th with the final weigh in time of 3:00pm on Sunday 28th. Socialising will follow immediately after so get cleaned up and back to the clubhouse for that. Being Sunday we would like finish the afternoon a little earlier than usual so for the BBQ best be there at 5:30. Of course this is for all members, not just those who fish the event.

The target fish list is included, this comp tends to confuse people so to be safe, if you catch any fish on the list, bring it in and have it weighed.

Mallacoota trip : A tentative booking for Karbeethong Lodge has been made, to be confirmed next week. There may still be beds available at the lodge and there is viable alternative accommodation available. If you have not advised your intention to join in but would like to, please contact us.

1.5 metre Jewie caught with garden rake : You may like to take your rake along to Mallacoota after reading this. I heard that a Mallacoota identity was cruising through The Narrows when he spotted a Seal playing with something on the surface and moved closer to investigate. To his amazement he saw the Seal was harassing a very large Jewfish, pushing it around and, holding it with his flippers and not allowing it to escape. The excited observer assessed the situation and, obviously a keen gardener, decided that what was needed was a garden rake ????. So he dashed home and grabbed his rake and hurried back to the scene where the drama was still playing out. He then hunted the annoyed Seal away from its prey and with the aid of his trusty tool raked the exhausted and disorientated Jewie boat side and drag it aboard. Sadly for this magnificent Mulloway (which was reported to be 5 feet or 1.5 metres long and around 34kg or 75 pounds in weight) there was to be no happy ending, it was said to have eaten very well.

Website : Our new look website is up and running at the same address as the superseded site, www.edenfishingclub.org, check it out !. Peter Van de Waterbeemd has put many hours of work into it and done a fine job, thanks Peter. The YTD fish weights page it not working yet, we will have that fixed soon.

Emailing newsletters : For those who have indicated that you are willing to receive your newsletter by email this will soon begin to happen. When it does you will receive one by both methods and from then we will cease to send paper copies. When we get the website working as well as we hope to, all sections of the newsletter will be available from it.

Membership renewals : If you find a renewal form attached it is because our records show that we have not received one from you to date. If you are a Life Member we need a form from you to let us know that you are still interested in the club and wish to receive newsletters.

If you have renewed and we are wrong then please let us know because we will only be sending newsletters to financial members after this one. If you have made the decision not to rejoin we thank you for your time with us and hope to see you back in the future.

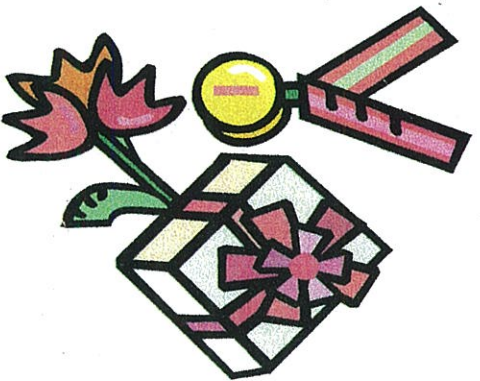
Fishing Report : I am short of reports from members but I have heard that Mowies are still going well from Mowarry Southward and although patchy, a good feed of flaties can be found if you look around. A few Kingies are being caught but only a few. One member was seen disposing of some good Bream and Luderick frames but no use asking him where they came from. A few members tried Wallagarough last weekend and came home disappointed, but convinced that the Bream were there, just not feeding because of a fresh. Trevally are cruising the estuaries and Dusky Flathead have come out of the holes.

Changes to rec fishing regulations : DPI NSW have announced changes including reductions in bag limits for some of our popular target species. Those fish now with a limit of 20 will have this cut to 10 and the one that will impact most on us is Sand & Tiger Flathead. The DPI fact sheet is included FYI.



Cheers for now,

BOBNALONG



Christmas Hamper : It is coming in a hurry so its time to start building a monster hamper to be drawn at the Christmas party set down for December 6th.
Please consider bringing along suitable items to add to it at functions in the led up to the date.

CATCH AND RELEASE BREAM COMPETITION



Current Leader : Bob Wilcox. **Length :** 42.7cm **Date caught :** September 1st

Changes to NSW recreational saltwater & freshwater fishing rules

Factsheet

Modest changes to the NSW recreational fishing rules will ensure the recreational fishing community's needs and expectations are met, while maintaining quality recreational fishing for the future.

A total of 16 changes will apply to recreational fishing rules. Five of the changes are minor adjustments to streamline rules and will have little or no impact on recreational fishing activities.

What these changes will mean for recreational fishers

SALTWATER

- » A daily bag limit of 10 applies for commonly caught species: Flathead (other than Dusky Flathead), Bream and Tarwhine, Tailor, Blue Swimmer Crab, Trevallies and Luderick. Possession limit to remain at 20 for the above species.
- » Two crab traps and four witches hats/hoop nets/lift nets per person will be permitted.
- » The bag limit of small baitfish has increased to 100 per species.

FRESHWATER

- » A maximum size limit of 80 cm for Murray Cod will be in place. The current minimum size limit of 60 cm remains. Catch and release of large Cod is permitted. The taking of two Cod per person within Copeton Dam will be permitted during the closed season.
- » The spawning closure for Australian Bass and Estuary Perch will be extended to four months (May – August) to protect early migrating bass. Catch and release of these species will be permitted during this zero bag limit closure.
- » A strictly regulated pilot program to allow bowfishing for carp is to be trialled in 2015 in key locations, and will be closely monitored by DPI.
- » Yabbies caught in a shrimp trap and shrimp caught in a yabby trap may be kept.
- » Yabbies are permitted to be taken using five hoop nets per person in Lake Lyell, Lake Wallace and Googong Dam.
- » A daily bag limit of five and possession limit of 10 applies to trout and salmon in general inland waters.

SALTWATER & FRESHWATER

- » Set recreational nets and traps are required to be marked with the fisher's initial, surname, year of birth and postcode.
- » Transhipping fish from one boat to another (except specified bait species) will not be permitted.

Reviews of NSW recreational fishing rules are undertaken periodically to provide for fairer sharing of the catch between recreational fishers. The changes to fishing rules were supported by a majority of submissions, as part of a comprehensive consultation process by the NSW Government in 2013.

A three-month advisory period will be implemented to provide time for recreational fishers and the public to adjust and learn about the changes.

Further information on the changed recreational fishing rules and the review process can be found at www.fisheries.nsw.gov.au or email fish.review@dpi.nsw.gov.au

© State of New South Wales through Department of Trade and Investment, Regional Infrastructure and Services 2014. The information contained in this publication is based on knowledge and understanding at the time of writing (Sept. 2014). However, because of advances in knowledge, users are reminded of the need

to ensure that the information upon which they rely is up to date and to check the currency of the information with the appropriate officer of the Department of Trade and Investment, Regional Infrastructure and Services or the user's independent adviser.



CAMPDUFF
MARINE AND AUTOMOTIVE
STEVENSON
MECHANICAL REPAIRS
Tels: **64966 4490**
Chr Princes Highway & Government Road - Eden

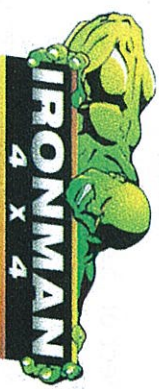
Your local agent for:

McLAY
BOATS

HONDA
MARINE



Raymarine
A FLIR COMPANY



FOR SALE

Bimini to suit tinny I.75 m wide, never been used

New price around \$275, asking \$175

Phone 0264963585

**Marine Carpet, good quality, rubber backed, 5m
long x 2m wide**

**Dark Grey in colour, never been used paid, \$290
asking \$180**

Phone 0264963585

**Have something to sell ???, Contact us, no charge
for Members**

MEN & BOYS v LADIES & GIRLS

GENDER BENDER COMP

Starts anytime Saturday 27th September and the final weigh in time will be 3:00 pm Sunday 28th. The clubhouse will be open to weigh fish from 3:30 on Saturday to save overloading the top servo if there are a few boats out.

The social side of the event will commence immediately after the weigh in on Sunday.

The object of the game is to catch and weigh **one** fish from **each group** to score points for your team.

It would be nice to know in advance who is actually fishing so to register please ring Bob on 6496 3585 or let Gwen know when you book for the BBQ.

FISH GROUP LIST

| | |
|---------|--------------------------------------|
| Group A | Sand Flathead Tiger flathead |
| Group B | Trevally Rubberlip Morwong |
| Group C | Bream Jackass Morwong |
| Group D | Kingfish Gummy Shark |
| Group E | Any Tuna Game Shark |
| Group F | Salmon Tailor |
| Group G | Slimy Mackerel Yellowtail Whiting |
| Group H | Leatherjacket Nannygai |
| Group I | Snapper Latchet Red Rock Cod |
| Group J | Luderick Drummer |
| Group K | River Flathead Jewfish Mullet |

| EAFC | | FISH WEIGHTS | | SEPT | 2014 | |
|--------------------|----------------|-------------------|--------------|-------------------|------|-------|
| SPECIES | MEN | WEIGHT KG. | LADIES | WEIGHT KG. | | |
| BREAM | | | | | | |
| DRUMMER | R.LEEDING | 3.025 | B.BLEEDING | | | 3.570 |
| FLATHEAD, RIVER | | | | | | |
| FLATHEAD, SAND | C.EDWARDS | 1.060 | P.SAMMUT | | | 0.736 |
| FLATHEAD, TIGER | F.DRENKHAHN | 2.682 | A.PATERSON | | | 0.315 |
| JEWFISH | | | | | | |
| KINGFISH | | | | | | |
| LATCHET GURNARD | F.DRENKHAHN | 1.126 | | | | |
| LEATHERJACKET | B.WILCOX | 1.318 | P.SAMMUT | | | 1.252 |
| LUDERICK | | | | | | |
| MACKEREL, SLIMY | T.MITCHELL | 0.705 | D.CUMMINGS | | | 0.140 |
| MARLIN | | | | | | |
| MORWONG, JACKASS | F.DRENKHAHN | 0.900 | | | | |
| MORWONG, RUBBERLIP | K.NEATH | 3.428 | | | | |
| NANNYGAI | G.MCMAHON | 1.446 | | | | |
| SALMON | | | | | | |
| SHARK, GAME | | | | | | |
| SHARK, GUMMY | P.VDWATERBEEMD | 4.332 | | | | |
| SNAPPER | F.DRENKHAHN | 2.092 | A.PATERSON | | | 0.635 |
| TAILOR | | | | | | |
| TREVALLY | | | | | | |
| TROUT | | | | | | |
| TUNA, BONITO | | | | | | |
| TUNA, STRIPED | | | | | | |
| TUNA, YELLOWFIN | S.PENTIN | 47.500 | | | | |
| WHITING | | | | | | |
| SPECIES | BOYS | WEIGHT KG. | GIRLS | WEIGHT KG. | | |
| BREAM | | | | | | |
| FLATHEAD, RIVER | | | | | | |
| FLATHEAD, SAND | | | AM.PATERSON | | | 0.355 |
| FLATHEAD, TIGER | | | AM.PATERSON | | | 0.475 |
| KINGFISH | | | | | | |
| LEATHERJACKET | | | | | | |
| LUDERICK | | | | | | |
| MACKEREL, SLIMY | | | AM.PATERSON | | | 0.090 |
| MORWONG, JACKASS | | | | | | |
| MORWONG, RUBBERLIP | | | AM.PATERSON | | | 1.130 |
| NANNYGAI | | | | | | |
| SALMON | | | | | | |
| SHARK, GAME | | | | | | |
| SHARK, GUMMY | | | | | | |
| SNAPPER | | | | | | |
| SWEEP | | | | | | |
| TAILOR | | | | | | |
| TREVALLY | | | | | | |
| TROUT | | | | | | |
| TUNA, BONITO | | | | | | |
| TUNA, STRIPED | | | | | | |
| WHITING | | | | | | |

PLEASE NOTE: WEIGHT DOCKETS ARE VALID FOR 2 MONTHS ONLY. WEIGHMASTER ROD PATERS



Eden Amateur Fishing Club Inc
PO Box 125 Eden 2551